

**12 Park Suites 5-7 Waverley Street, Aboretum, Nottingham,  
Nottinghamshire, NG7 4LE**  
**£356 Per week**

- Available Academic Year August 2026/2027
- Including Gas, Electric, Water and the Internet, subject to fair usage.
- Secure Gated Development
- Stylish
- EPC C
- £178 PPPW based on 2 sharing
- Luxury Accommodation
- CCTV
- Council Tax B

# 12 Park Suites 5-7 Waverley Street, Nottingham NG7

## 4HF

\*\*CITY CENTRE APARTMENT AVAILABLE AUGUST 2026/2027

Spacious 2 bedroom apartment at only £178.00 PPPW BASED ON 2 SHARING  
INCLUSIVE of Electric, Water and the Internet, subject to fair usage.

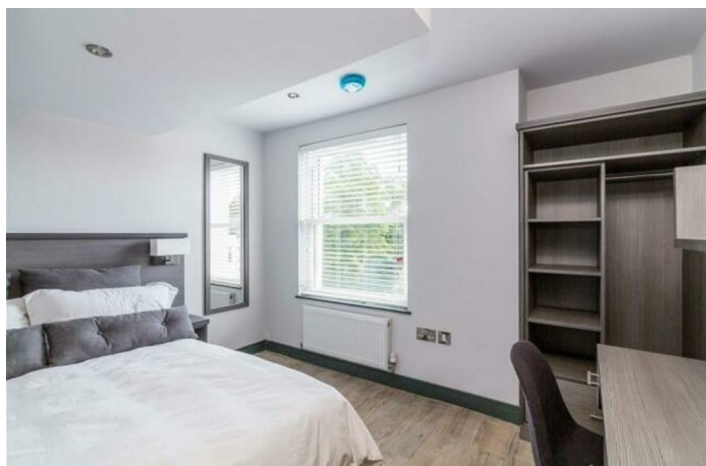
Mulberry Lane Estates and Lettings are proud to bring this 2 double bedroom apartment to the market, not to be missed.  
Available for the 2026/2027 academic year for £178.00 PPPW based on 2 sharing including electric, water and internet.  
Park Suites is First Class luxury accommodation for Students of Nottingham.  
Just 2 minutes walk to the NTU City Campus and the City Centre.

Dont miss out!

Call Mulberry Lane now to arrange a viewing!



Council Tax Band: B



### About

Stylish gated two bedroom apartment minutes from NTU City Campus and Nottingham City Centre, available for the 2026/2027 Academic Year!

### Lounge/Kitchen

A modern open plan kitchen and lounge benefits from integrated appliances including oven, hob, dishwasher, washer/dryer and Fridge/Freezer, there is a wall mounted tv in the lounge area for cosy evenings.

### Bedroom

Both stylish double bedrooms are finished with double bed, mattress, wardrobe, bedside table, desk and chair and also a wall mounted TV.

### Shower Room

Finished to a high standard, with a large shower, sink and WC.



## Directions

## Viewings

Viewings by arrangement only. Call 01157042554 to make an appointment.

## EPC Rating:

C

Energy Efficiency Rating		Current	Potential
Very energy efficient - lower running costs			
(92 plus) A			
(81-91) B			
(69-80) C		77	
(55-68) D			
(39-54) E			
(21-38) F			
(1-20) G			
Not energy efficient - higher running costs			
England & Wales		EU Directive 2002/91/EC	